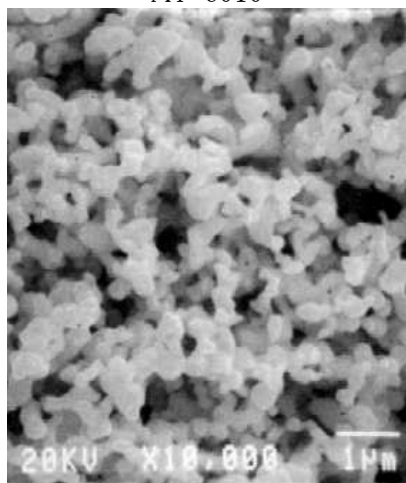


Precious metal powder-1

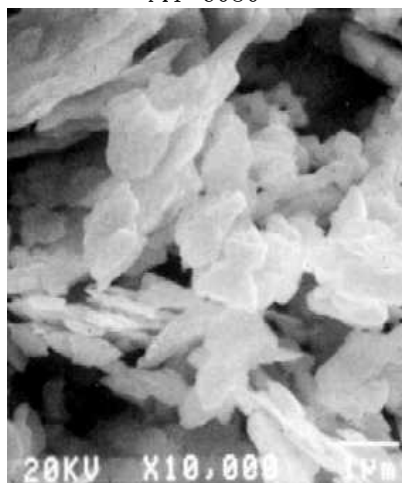
Silver powders

Typical Properties		AY-6010	AY-6080
Tap Density	g/ml	0.7~1.6	3.5~4.5
Particle Size	μm	6.0~13.0	*0.2~1.0
Surface Area	m^2/g	1.0~2.5	1.5~3.0

AY-6010



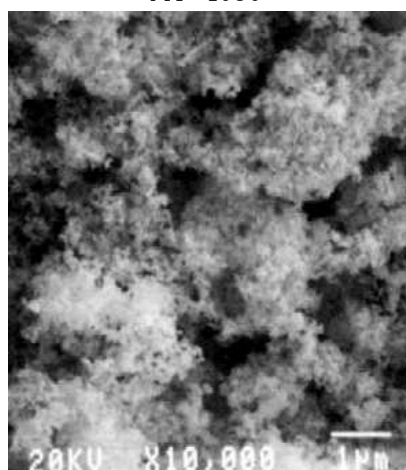
AY-6080



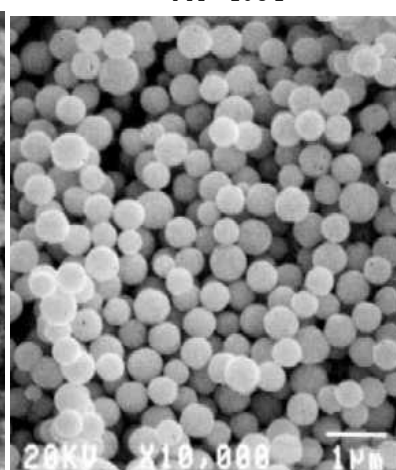
Palladium powders

Typical Properties		AY-4030	AY-4054	AY-406
Tap Density	g/ml	0.6~1.2	4.0~7.0	4.0~8.0
Particle Size	μm	1.0~7.0	0.3~1.4	1.0~3.0
Surface Area	m^2/g	9.0~16.0	0.4~1.7	0.5~1.5

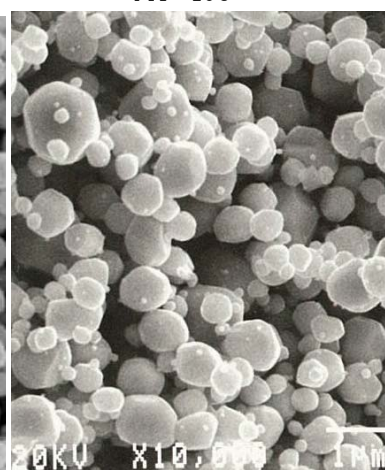
AY-4030



AY-4054



AY-406



*Value by sedimentation type particle size analyzer, laser scattering type is used for others.
See "Test procedure of particle performance, section 1: Particle size".

Attention: These pastes and powders are materials for industrial use only. Refer to appropriate MSDS and statement of caution.

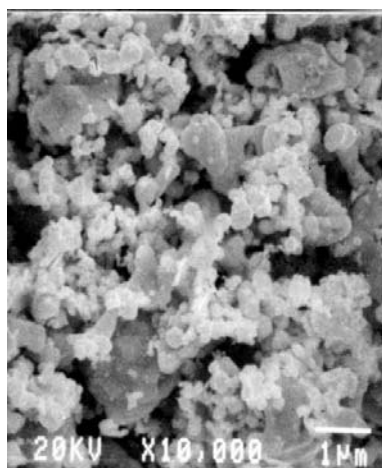
Notice: Values in each data are not specified, just representative values.

Precious metal powder-2

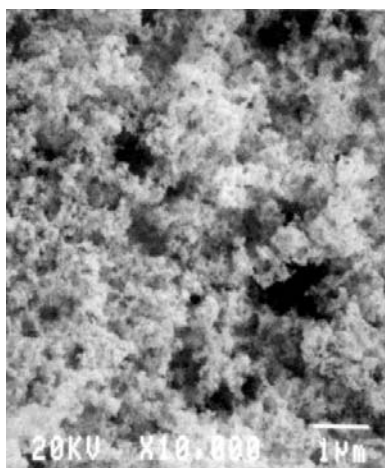
Platinum powders

Typical Properties		AY-1010	AY-1020	AY-1050
Tap Density	g/ml	3.0~7.0	0.6~1.0	9.0~12.0
Particle Size	μm	1.0~10.0	3.0~13.0	0.4~0.8
Surface Area	m ² /g	0.5~3.0	20~40	0.8~1.2

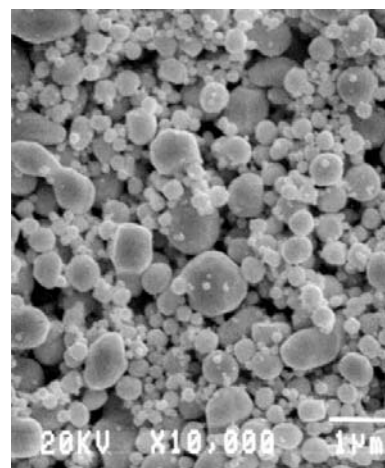
AY-1010



AY-1020



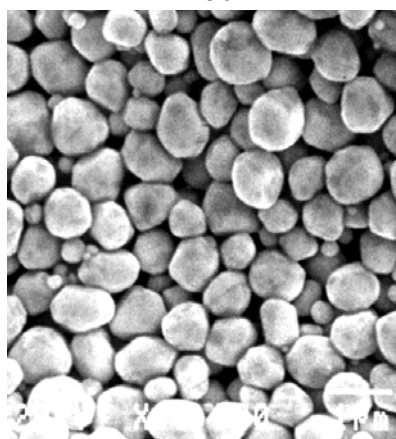
AY-1050



Gold powder

Typical Properties		AY-5022
Tap Density	g/ml	2.0~12.0
Particle Size	μm	*0.3~2.0
Surface Area	m ² /g	0.2~1.0

AY-5022



*Value by sedimentation type particle size analyzer, laser scattering type is used for others.
See "Test procedure of particle performance, section 1: Particle size".

Attention: These pastes and powders are materials for industrial use only. Refer to appropriate MSDS and statement of caution.

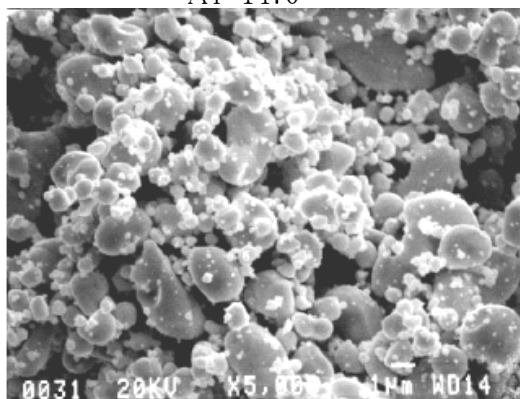
Notice: Values in each data are not specified, just representative values.

Precious metal alloy powder

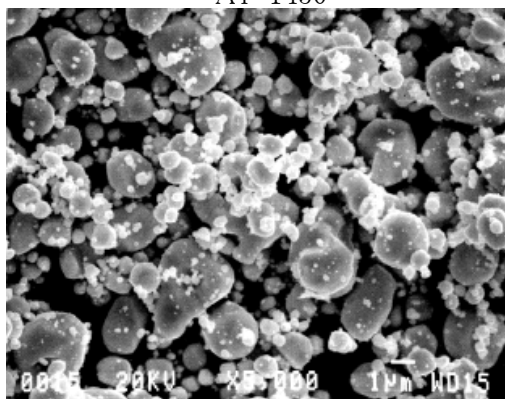
PtPd alloy powders

Typical Properties		AY-1470	AY-1450
Pt/Pd ratio	Pt/Pd	75/25	50/50
Tap Density	g/ml	9.4	8.8
Particle Size	μm	1.4	1.8
Surface Area	m ² /g	0.5	0.5

AY-1470



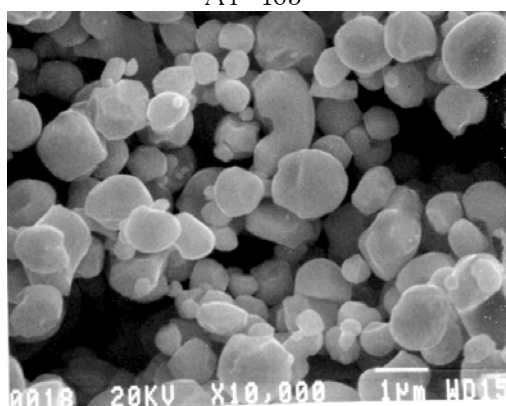
AY-1450



AgPd alloy powder

Typical Properties		AY-463
Pt/Pd ratio	Ag/Pd	70/30
Tap Density	g/ml	3.0~6.0
Particle Size	μm	1.0~3.0
Surface Area	m ² /g	0.6~1.2

AY-463



Attention: These pastes and powders are materials for industrial use only. Refer to appropriate MSDS and statement of caution.

Notice: Values in each data are not specified, just representative values.